



Expressive Arts
Expressing. Individually Creatively

Year 11 – Exam
Develop theme in the same way as the 'Portraiture' project using the AO's

Exam booklet
Choice of 5 themes

AO2-Experiment/Refine
AO3- Record
AO4-Response

10 hour practical exam

40%



AO4- Response to 'Portraiture' project
Completing a final piece

Develop a final piece linking your strongest technique/process and artist inspiration



College
Sixth Form

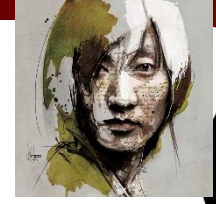
JANUARY
START OF EST – EXTERNALLY SET TASK

COMPLETION OF PORTFOLIO
1ST EXAM PIECE – COMPLETED BEFORE CHRISTMAS

Year 10 – *Focus on assessment objectives and the visual elements*

AO2, AO3 – Experiment/refine
Develop media in acrylic, inks, charcoal, pencil and oil pastel, print process- lino, stencils

Mixed Media
Collage
Florian Nicolle
Sandra Chevrier

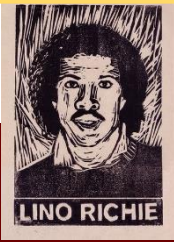


11

AO1/AO3 – Develop/Record
Artist research and analysis



Expressionism
David Theron
Guy Denning
Antoine Stevens



Lino print process
Reduction lino print
Develop printways

60%

PORTRAITURE – PORTFOLIO – 60%

10

Graffiti

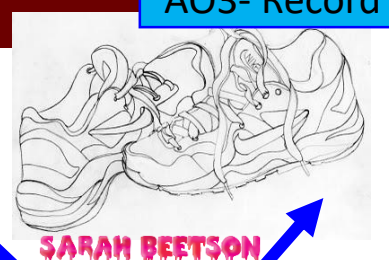
Stencil cutting
Tags
Graffiti selfie



3D sculpture
Peter Anton
Monomi Ohno



AO2
Sarah Graham
Hyper Realism
Watercolour



AO3- Record

Shoe Project

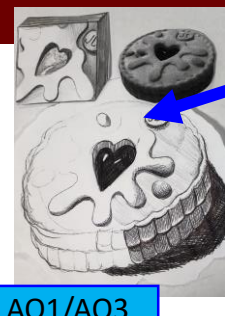
AO4- Response



AO1- Develop
AO2-Experiment/Refine
AO3- Record
AO4-Response

Observational Drawing

Food

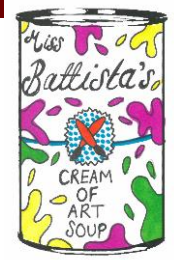


AO1/AO3

Year 9 is a skills based year
Building the assessment objectives used at GCSE

9

Pop Artists
Lichtenstein
Warhol
Rizzi
Opie
Redman
Britto



Visual Elements that we look at :
Line, tone, texture, colour, shape, pattern



Visual Elements that we look at :
Line, tone, texture, colour, shape, pattern

Analytical
Synthetic



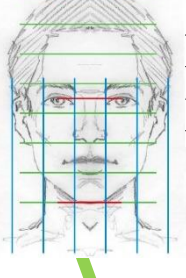
Fonts and typography
A B C

Pop Art

Cubism

Proportion

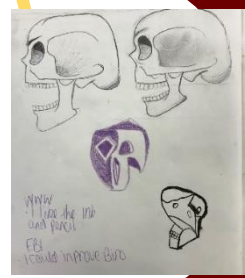
Visual Elements that we look at:
Line, tone, texture, form, shape



Grid Drawing



Portraiture



Van Gogh

Visual Elements that we look at :
Line, tone, texture, colour

Year 8 is a continuation of the
Visual Elements



7

Line



Line = Zentangles and drawing to music

Tone



Tone = tonal range, gradient

Texture



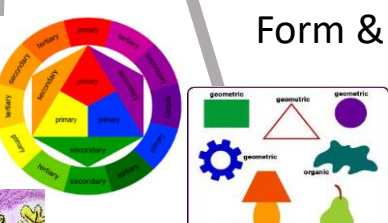
Texture = textured hand, surreal texture, dragon eye

Colour

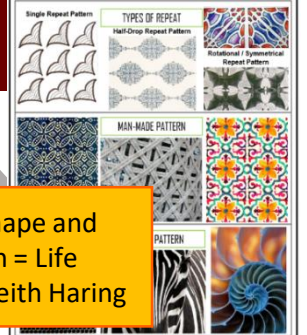


Colour = The Green Man project

Form & Shape



Form, shape and Pattern = Life drawing, Keith Haring



Pattern

The Visual Elements